

The Basil Hobbs Memorial Snake Island Nanaimo (SIN) Regatta

Friday, June 28 to Sunday June 30, 2019
Nanaimo Yacht Club

SAILING INSTRUCTIONS

Version 1.3

The notation '[DP]' in a rule in the SI means that the penalty for a breach of that rule may, at the discretion of the protest committee, be less than disqualification. The notation '[NP]' means that a breach of the rule will not be grounds for a protest by a boat. This changes RRS 60.1(a).

1. RULES

- 1.1. The regatta will be governed by the rules as defined in *The Racing Rules of Sailing* ("RRS").
- 1.2. PHRF-BC class rules will apply to all handicap keelboat divisions.
- 1.3. PHRFNW class rules will apply to the multihull division.
- 1.4. ORC Rating System rules will apply to all boats racing under an ORC Handicap to receive an ORC courtesy scoring result.
- 1.5. One design divisions shall sail according to their class rules.

2. NOTICES TO COMPETITORS

Notices to competitors will be posted on the Official Notice Board(s) located in the NYC's clubhouse lower level, next to the Regatta Race Office.

3. CHANGES TO SAILING INSTRUCTIONS

Any change to the sailing instructions will be posted before 0830 hours on the day it will take effect, except that any change to the schedule of races will be posted by 2000 hours on the day before it will take effect.

4. SIGNALS MADE ASHORE

- 4.1. Signals made ashore will be displayed from the flagstaff adjacent to the NYC Clubhouse.
- 4.2. When flag AP is displayed ashore, '1 minute' is replaced with 'not less than 90 minutes' in the race signal AP.

5. SCHEDULE OF RACES AND REGISTRATION

Friday, June 28	Registration	1600 - 2000
Saturday, June 29	Registration	0700 - 0800
	Competitors Meeting (NYC Clubhouse's main hall)	0830
	Warning Signal for the first race of the day	1025
Sunday, June 30	Warning Signal for the first race of the day	1025

6. DIVISION FLAGS

- 6.1. Division splits will be announced and posted during the Competitor's Meeting at 0830 hours Saturday.
- 6.2. The flag flown by the Race Committee for each division's start will be the numeral pennant corresponding to the division number.
- 6.3. Each division will be assigned a coloured ribbon to be flown from the backstay or prominent location near the stern.

7. RACING AREA

- 7.1. The racing area will be in an area off Protection Island, Newcastle Island and Gabriola Island. It may also include Northumberland Channel, Maude Island, Entrance Island, Halibut Back buoy and/or Five Fingers Islets. For details see Attachment "B."
- 7.2. The signal boat will be *Encanto*, a green Canoe Cove 41 powerboat, anchored near Angle Point, Newcastle Island, in the area marked "SA" (Starting Area) on Attachment "B."

8. THE COURSES

- 8.1. All races will be listed on a committee boat signal board using the marks as detailed in Attachments "A", "B", and "C." *Please write down - or take a picture of - your course to be sailed.*
- 8.2. Courses to be sailed will be displayed on the signal board by the race committee before the warning signal.
- 8.3. The race committee will make a broadcast by VHF of the declared wind speed range for ORC courtesy scoring prior to the warning signal of applicable divisions.

9. MARKS

Descriptions of the marks used are detailed in Attachment "A."

10. AREAS THAT ARE OBSTRUCTIONS

- 10.1. No boats shall pass between Protection and Newcastle Islands while racing.
- 10.2. In all courses, unless specified in SI 8.1, Aids to Navigation will be shall be passed on their prescribed side according to IALA – System B. [NP]

11. THE START

- 11.1. Races will be started using RRS 26 with the warning signal made 5 minutes before the starting signal.
- 11.2. The start line will be between an orange flag on the signal boat and an **orange** buoy at the pin end of the start line.
- 11.3. Boats whose warning signal has not been made shall avoid the starting area during the starting sequence for other races. [NP]
- 11.4. A boat starting later than 10 minutes after her starting signal will be scored Did Not Start without a hearing. This changes RRS Appendix A4.

12. THE FINISH

- 12.1. The finish line will be between an orange flag on the committee boat and a **yellow** buoy at the pin end of the finish line.

13. TIME LIMITS

- 13.1. Longer races will be attempted for faster divisions. Only one race per day will be run for the cruiser/racer division.
- 13.2. If there is a one design class, windward/leeward races of about 30-45 minutes will be targeted. If this target time is not met, it will not be grounds for redress or protest.
- 13.3. No races will be started after 1530 hours Saturday and 1430 hours Sunday. This modifies NOR 6 SCHEDULE.

14. PENALTY SYSTEM

- 14.1. RRS Appendix T, ARBITRATION, will apply.
- 14.2. The first two sentences of RRS 44.1 are changed to: “A boat may take a One-Turn Penalty when she may have broken one or more rules of RRS Part 2 or RRS 31 in an incident while *racing*.”

15. PROTESTS AND REQUESTS FOR REDRESS

- 15.1. Protest forms are available at the regatta Official Notice Board located on the lower level of the clubhouse. Completed protest documents must be filed in the envelope on the Race Committee Office to the left of the Official Race Board prior to the Protest Time Limit.
- 15.2. For each division, the protest time limit is 90 minutes after a) the last boat has finished the last race of the day or b) the race committee signals no more racing today, whichever is later.

- 15.3. Protest hearing notices will be posted on the official notice board within 30 minutes following the protest time limit to inform competitors of hearings in which they are parties or named as witnesses.
- 15.4. Notices of protests by the race committee or protest committee will be posted to inform boats under RRS 61.1(b).
- 15.5. Protest hearings will be held in the Race Committee Office, located downstairs at the NYC Clubhouse, as quickly as possible and in the approximate order of receipt, beginning at the time announced on the hearing notice.

16. SCORING

- 16.1. One race must be completed to constitute a series.
- 16.2. When fewer than five races have been completed, a boat's series score will be the total of her race scores. When five or more races have been completed, a boat's series score will be the total of her race scores excluding her worst score.
- 16.3. PHRF Time-On-Time calculations will be used for scoring handicapped divisions.
- 16.4. ORC Courtesy Scoring (NOR 9.3) will use Coastal Long Distance or Windward-Leeward Time-On-Time triple number calculations depending on the course configuration.
- 16.5. One design divisions will be scored in finish order.
- 16.6. The Cruiser/Racer divisions will have its own scoring and results are not eligible for VIRS or VARC points nor the Basil Hobbs' Memorial Cup.

17. SAFETY REGULATIONS [DP][NP]

- 17.1. A boat that retires from a race shall notify the race committee as soon as possible.
- 17.2. All boats shall comply with the minimum equipment requirements as prescribed for their division in NOR 3 SAFETY REGULATIONS.

18. RADIO COMMUNICATION

- 18.1. There may be a roll call beginning at 1000 hours each of the two race days to ensure communication is possible between the Race Committee and competitors. The Race Committee will be monitoring VHF Channel 69.
- 18.2. A boat shall neither make radio transmissions while racing, except for emergencies, nor receive radio communications not available to all boats. This restriction also applies to mobile telephones.

19. RIGHTS TO USE NAME AND LIKENESS

In participating in an event, a competitor automatically grants the Organizing Authority and the sponsors of the event, the right in perpetuity, to make, use and show, from time to time and at their discretion, any

motion pictures, still pictures and live, taped or film television and other reproductions of him or her during the period of the competition for the said event in which the competitor participates and in all material to the said event without compensation.

20. PRIZES

- 20.1. Prizes will be awarded for 1st, 2nd and 3rd place in each division with at least five boats. 1st and 2nd (possibly) will be awarded for divisions with fewer than five boats.
- 20.2. For determining the overall score for the regatta and the awarding the Basil Hobbs Memorial Cup, RRS Appendix A scoring will be used including any tie-breaking procedure. The Overall Score for the BHM Cup will be the lowest average score with no throw outs, determined by Total Aggregate Score of Boat/Number of Races.
- 20.3. The Cruiser/Race division is excluded from the Basil Hobbs Memorial Cup.

21. DISPOSAL OF TRASH

As sailors, we seek to protect and restore our oceans and coastal waters. See RRS 55. Trash shall be contained on board and disposed of appropriately when back ashore. All garbage and recycling is to be deposited in the NYC club facilities provided. [DP]

22. DISCLAIMER OF LIABILITY

Competitors participate in the regatta entirely at their own risk. See RRS 4, Decision to Race. The organizing authority will not accept any liability for material damage or personal injury or death sustained in conjunction with or prior to, during, or after the regatta.

23. INSURANCE

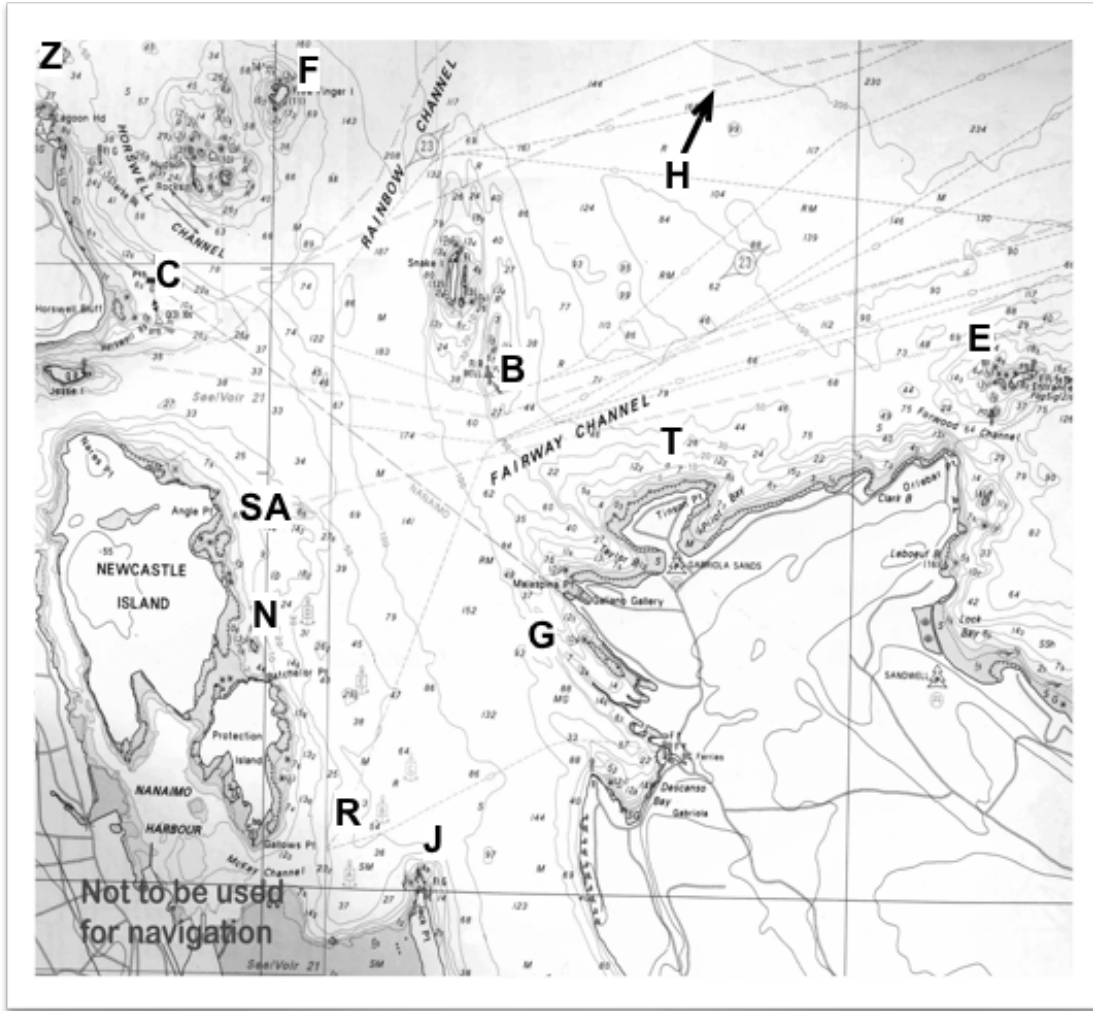
Each participating boat shall be insured with valid third-party liability insurance with a minimum cover of \$1,000,000 per event or the equivalent.

ATTACHMENT “A” MARKS OF THE COURSE

Warning: Yachts are advised that shallow water may exist in areas surrounding marks and the use of navigational charts and depth sounders is recommended. In addition, be advised that Military Activity Area Whisky Golf located north of Five Finger Islets may be active on the day of the race in which case yachts are required to keep well clear. Marks are as follows – approximate locations are on the diagram included in these instructions.

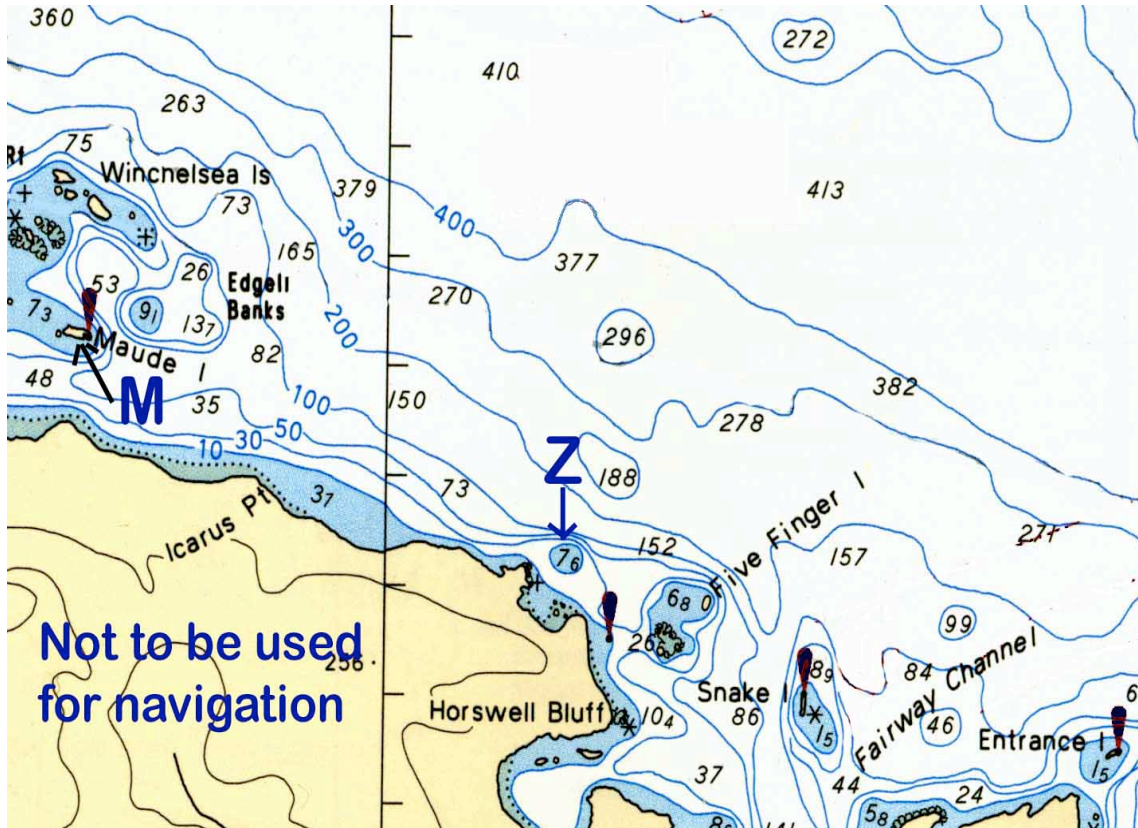
Designation	Name
SA	The Starting Area, set off Angle Point on Newcastle Island (the so-called “Grassy Knoll”)
B	Snake Island Bell Buoy marked P2
C	Inflatable mark set in Horswell Channel
E	Entrance Island
F	Five Finger Islet
G	Inflatable Mark set to the southwest of Malaspina Point on Gabriola Island.
H	Halibut Bank Buoy at approximately: N49 20.4 W123 43.7
J	Inflatable Mark near Jack Point
L	Leeward Mark – Inflatable Mark set to leeward of the starting line
M	Maude Island <i>(Yachts are cautioned to keep well clear of a drying reef offshore west of Maude Island)</i>
N	Inflatable Mark set north of Power Squadron Reef, approximately half way to Angle Point
R	Inflatable Mark located between Protection Island and Jack Point
T	Inflatable Mark set to the north of Tinson Point on Gabriola Island
W	Windward Mark – Inflatable Mark set to weather of the starting line.
Z	Inflatable Mark set in the vicinity of Neck Point

ATTACHMENT "B"



RACING AREAS (large scale detail)

ATTACHMENT B (Continued)
RACING AREAS (small scale showing Maude Island)



ATTACHMENT "C" COURSE BOARD DESCRIPTIONS

The course board will be placed on the stern of the committee boat and indicates the Marks in the order they are to be rounded, and the side (Port or Starboard) the Marks are to be left when rounding. For example:

1 st Mark	2 nd Mark	3 rd Mark	4 th Mark etc.	S or P (indicates Marks are to be left all to Starboard or all to Port)
----------------------	----------------------	----------------------	---------------------------	---

If the rounding side is not the same for all Marks of the course, the S or P indicator defines the side for the Marks listed to the left of the S or P indicator. Marks following this S or P indicator will be rounded on the opposite side, and this will be indicated by another S or P indicator etc. For example:

1 st Mark	2 nd Mark	S or P (indicates Marks 1&2 are both to be left to Starboard or both left to Port)	3 rd Mark	4 th Mark	S or P (indicates Marks 3&4 are both to be left to Starboard or both left to Port)
----------------------	----------------------	--	----------------------	----------------------	--

A course board showing the following indicates:

Start, Five Finger Islet and Entrance Island left to Starboard, then Five Finger Islet left to Port, then Finish.

F	E	S	F	P
---	---	---	---	---