

# *The Basil Hobbs Memorial Snake Island Nanaimo (SIN) Regatta*

Friday, Saturday and Sunday, June 29, 30, and July 1, 2018  
*Nanaimo Yacht Club*

## **SAILING INSTRUCTIONS**

*Version 2.0*

### 1 RULES

- 1.1 The regatta will be governed by the rules as defined in The Racing Rules of Sailing, 2017 - 2020, the prescriptions of Sail Canada when they apply, and the rules of PHRF-NW (where applicable), the [2017 US Sailing SER category “Nearshore”](#) will be the Safety Equipment Requirements category as modified by the NoR.
- 1.1a One design rules apply to one design divisions.
- 1.2 In all rules governing this regatta;
  - (a) [DP] denotes a rule for which the penalty is at the discretion of the Jury; and
  - (b) [NP] denotes that a breach of this rule will not be grounds for protest by a boat. This changes RRS 60.1(a).

### 2 NOTICES TO COMPETITORS

Notices to competitors will be posted on the Official Notice Board(s) located in the NYC’s clubhouse lower level, next to the Regatta Race Office.

### 3 CHANGES TO SAILING INSTRUCTIONS

Any change to the sailing instructions will be posted before 0830 hrs on the day it will take effect, except that any change to the schedule of races will be posted by 2000 hrs on the day before it will take effect.

### 4 SIGNALS MADE ASHORE

- 4.1 Signals made ashore will be displayed from the flagstaff adjacent to the NYC Clubhouse.
- 4.2 When flag AP is displayed ashore, ‘1 minute’ is replaced with ‘not less than 90 minutes’ in the race signal AP.

## 5 SCHEDULE of RACES and REGISTRATION

Registration	Friday, June 29	1600-2000
Registration	Saturday, June 30	0700-0800
Competitor's meeting (NYC Clubhouse's main hall)	Saturday, June 30	0830
Warning Signal for first race of the day	Saturday, June 30	1025
Warning Signal for first race of the day	Sunday, July 1	1025

## 6 DIVISION FLAGS

- 6.1 Division splits will be announced and posted during the Competitor's meeting at 0830 Saturday.
- 6.2 The flag flown by the Race Committee for each division's start will be the numeral pennant corresponding to the division number.
- 6.3 Each division will be assigned a coloured ribbon to be flown from the backstay or prominent location near the stern.

## 7 RACING AREA

- 7.1 The racing area will be in an area off Protection Island, Newcastle Island and Gabriola Island. It may also include Northumberland Channel, Maude Island, Entrance Island, Halibut Back buoy and/or Five Fingers Islets. For details see Attachment "B."
- 7.2 The signal boat will be *Encanto*, a green Canoe Cove 41 powerboat, anchored near Angle Point, Newcastle Island, in the area marked "SA" (Starting Area) on Attachment "B."

## 8 THE COURSES

- 8.1 All races will be listed on a committee boat signal board using the marks as detailed in Attachments "A", "B", and "C." *Please write down - or take a picture of - your course to be sailed.*
- 8.2 In all courses, unless specified in 8.1; Aids to Navigation will be shall be passed on their prescribed side according to IALA – System B.
- 8.3 No later than the warning signal, the race committee will display the course to be sailed.
- 8.4 No boats shall pass between Protection and Newcastle Islands while racing.

## 9 MARKS

Descriptions of the marks used are detailed in Attachment "A."

## Sailing Instructions

### 10 THE START

- 10.1 Races will be started using Rule 26 with the warning signal made 5 minutes before the starting signal.
- 10.2 The start line will be between an orange flag on the signal boat and an **orange** buoy at the pin end of the start line.
- 10.3 [NP] Boats whose warning signal has not been made shall avoid the starting area during the starting sequence for other races.
- 10.4 A boat starting later than 10 minutes after her starting signal will be scored Did Not Start without a hearing. This changes rule A4.
- 10.5 In a General Recall, the division recalled will start again in the same sequence.

### 11 THE FINISH

- 11.1 The finish line will be between an orange flag on the committee boat and a **yellow** buoy.

### 12 TIME LIMITS

- 12.1 Longer races will be attempted for faster divisions. Only one race per day will be run for the cruiser/racer class.
- 12.2 If there is a one design class, windward/leeward races of about 30-45 minutes will be targeted. If this target time is not met, it will not be grounds for redress or protest.
- 12.3 No races will be started after 1500 Saturday; 1430 Sunday.
- 12.4 No times will be taken after 1730 Saturday and 1630 Sunday.

### 13 PENALTY SYSTEM

- 13.1 Rule 44.1, Two turn penalty, is replaced with one turn where applicable.
- 13.2 However, to help avoid a protest room hearing, Rule 44.1 is amended to permit a boat that has broken a rule of Part 2 or Rule 31 to take a penalty after racing but prior to any protest hearing. Her penalty shall be a scoring penalty as calculated in rule 44.3(c) equal to 40 per cent of the number of entries in the division (rounding 0.5 upward) but shall not be less than three places, added to her finish position. However, she shall not be scored worse than "Did Not Finish." If she caused injury or serious damage or gained a significant advantage in the race by her breach, her penalty shall be to retire.

### 14 PROTESTS AND REQUESTS FOR REDRESS

- 14.1 Protest forms are available at the regatta Official Notice Board located on the lower level of the clubhouse. Completed protest documents must be filed in the envelope on the Race Committee Office to the left of the Official Race Board prior to the Protest Time Limit.
- 14.2 For each division, the protest time limit is 90 minutes after a) the last boat has finished the last race of the day or b) the race committee signals no more racing today, whichever is later.

Race officer: Ken Lott

## Sailing Instructions

- 14.3 Protest hearing notices will be posted on the official notice board within 30 minutes following the protest time limit to inform competitors of hearings in which they are parties or named as witnesses.
- 14.4 Notices of protests by the race committee or protest committee will be posted to inform boats under rule 61.1(b).
- 14.5 Protest hearings will be held in the Race Committee Office, located downstairs at the NYC Clubhouse, as quickly as possible and in the approximate order of receipt, beginning at the time announced on the hearing notice.
- 15 ARBITRATION
- 15.1 The Snake Island Nanaimo Regatta will be using RRS Appendix “T” procedures.
- 16 SCORING
- 16.1 One race must be completed to constitute a series.
- 16.2 When fewer than five races have been completed, a boat’s series score will be the total of her race scores.
- 16.3 When five or more races have been completed, a boat’s series score will be the total of her race scores excluding her worst score.
- 16.4 PHRF-NW Time-On-Time calculations will be used for scoring divisions that are not one-design.
- 16.5 Tie-breaking procedures are outlined in RRS Appendix “A.”
- 16.6 The Race-Cruiser division will have its own scoring and is not eligible for for the Basil Hobbs Memorial Trophy.
- 17 [DP] [NP] SAFETY REGULATIONS
- 17.1 A boat that retires from a race shall notify the race committee as soon as possible.
- 17.2 All boats shall comply with minimum equipment requirements as prescribed in [2017 US Sailing SER category “Nearshore”](#) as modified by the NoR.
- 18 RADIO COMMUNICATION
- 18.1 There may be a roll call beginning at 1000 each of the two race days to ensure communication is possible between the Race Committee and competitors. The Race Committee will be monitoring VHF Channel 69.
- 18.2 A boat shall neither make radio transmissions while racing, except for emergencies, nor receive radio communications not available to all boats. This restriction also applies to mobile telephones.
- 19 RIGHTS TO USE NAME AND LIKENESS
- In participating in an event, a competitor automatically grants the Organizing Authority and the sponsors of the event, the right in perpetuity, to make, use and show, from time to

## Sailing Instructions

time and at their discretion, any motion pictures, still pictures and live, taped or film television and other reproductions of him or her during the period of the competition for the said event in which the competitor participates and in all material to the said event without compensation.

### 20 PRIZES

20.1 Prizes will be awarded for 1st, 2nd and 3rd place in each division with at least five boats. 1st and 2nd (possibly) will be awarded for divisions with less than five boats.

20.2 For determining the overall score for the regatta and the awarding the Basil Hobbs Memorial Cup, RRS Appendix "A" scoring will be used including any tie-breaking procedure. The Overall Score for the BHMCup will be the lowest average score with no throw outs, determined by Total Aggregate Score of Boat/Number of Races.

20.2a The Cruiser/Race division is excluded from the Basil Hobbs Memorial Cup.

### 21 DISPOSAL OF TRASH

[DP] As sailors, we seek to protect and restore our oceans and coastal waters. See rule 55. Trash must be contained on board and disposed of appropriately when back ashore. All garbage and recycling is to be deposited in the NYC club facilities provided.

### 22 DISCLAIMER OF LIABILITY

Competitors participate in the regatta entirely at their own risk. See RRS rule 4, Decision to Race. The organizing authority will not accept any liability for material damage or personal injury or death sustained in conjunction with or prior to, during, or after the regatta.

### 23 INSURANCE

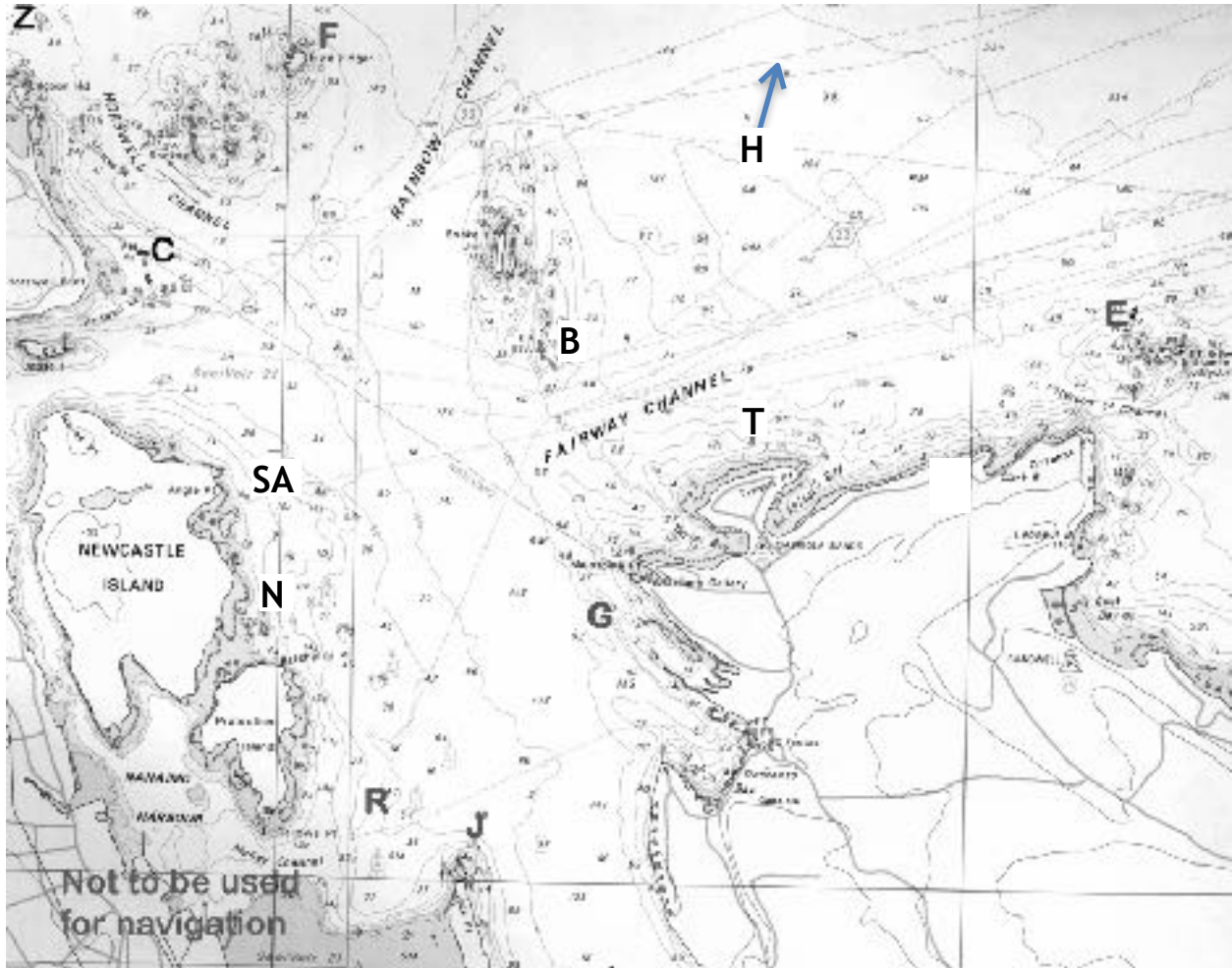
Each participating boat shall be insured with valid third-party liability insurance with a minimum cover of \$1,000,000 per event or the equivalent.

ATTACHMENT “A”  
MARKS OF THE COURSE

Warning: Yachts are advised that shallow water may exist in areas surrounding marks and the use of navigational charts and depth sounders is recommended. In addition, be advised that Military Activity Area Whisky Golf located north of Five Finger Islets may be active on the day of the race in which case yachts are required to keep well clear. Marks are as follows – approximate locations are on the diagram included in these instructions.

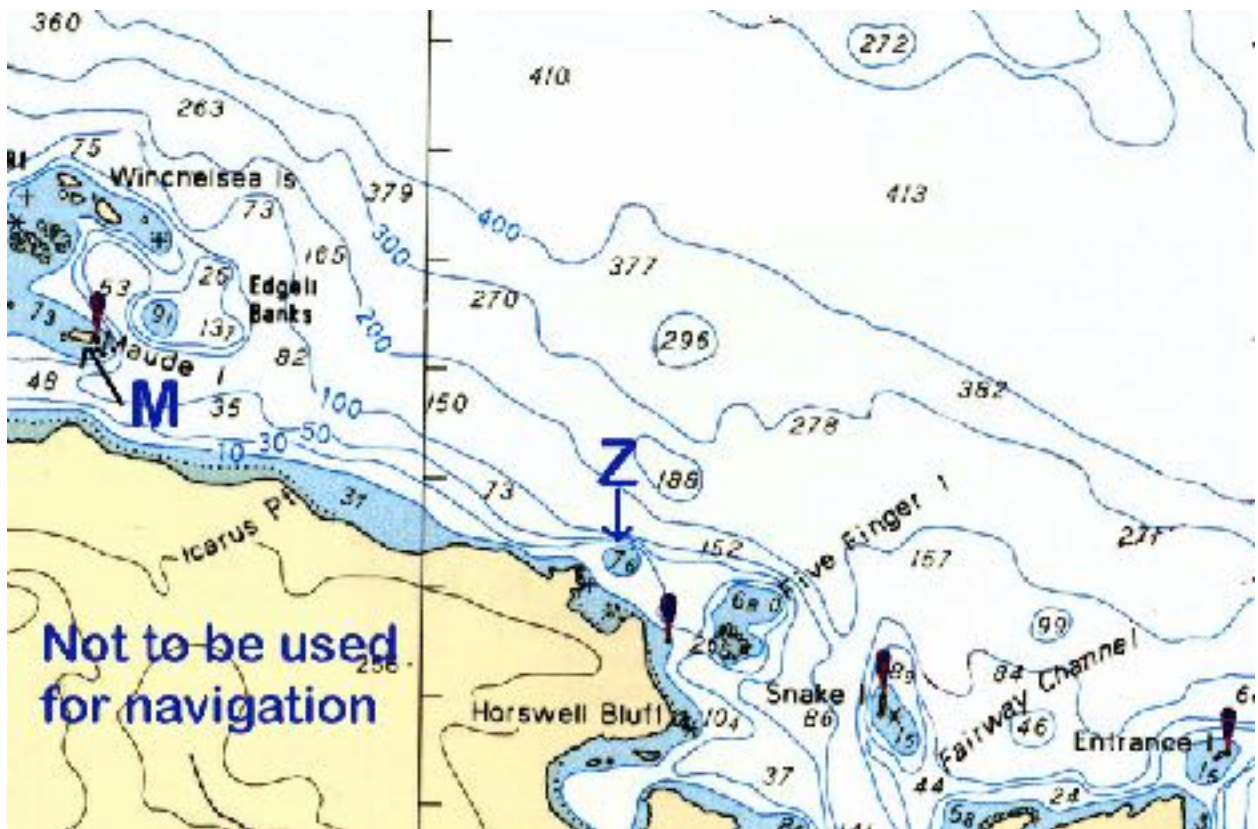
Designation	Name
SA	The Starting Area, laid off Angle Point on Newcastle Island (the so-called “Grassy Knoll”)
B	Snake Island Bell Buoy marked P2
C	Green Can Buoy marked P15 in Horswell Channel
E	Entrance Island
F	Five Finger Islet
G	Inflatable Mark laid to the southwest of Malaspina Point on Gabriola Island.
H	Halibut Bank Buoy at approx. N49 20.4 W123 43.7
J	Inflatable Mark near Jack Point
L	Leeward Mark – Inflatable Mark laid to leeward of the starting line
M	Maude Island <i>(Yachts are cautioned to keep well clear of a drying reef offshore west of Maude Island)</i>
N	Inflatable Mark laid north of Power Squadron Reef, approximately half way to Angle Point
R	Inflatable Mark located between Protection Island and Jack Point
T	Inflatable Mark laid to the north of Tinson Point on Gabriola Island
W	Windward Mark – Inflatable Mark laid to weather of the starting line.
Z	Inflatable Mark laid in the vicinity of Neck Point

ATTACHMENT "B"  
Racing Area (large scale detail)



Attachment B (continued)

Racing Areas (small scale showing Maude Island)





ATTACHMENT “C”  
COURSE BOARD DESCRIPTIONS

The course board will be placed on the stern of the committee boat and indicates the Marks in the order they are to be rounded, and the side (Port or Starboard) the Marks are to be left when rounding. For example:

1 <sup>st</sup> Mark	2 <sup>nd</sup> Mark	3 <sup>rd</sup> Mark	4 <sup>th</sup> Mark etc.	<b>S or P</b> (indicates Marks are to be left all to Starboard or all to Port)
----------------------	----------------------	----------------------	------------------------------	---

If the rounding side is not the same for all Marks of the course, the S or P indicator defines the side for the Marks listed to the left of the S or P indicator. Marks following this S or P indicator will be rounded on the opposite side, and this will be indicated by another S or P indicator etc. For example:

1 <sup>st</sup> Mark	2 <sup>nd</sup> Mark	<b>S or P</b> (indicates Marks 1&2 are both to be left to Starboard or both left to Port)	3 <sup>rd</sup> Mark	4 <sup>th</sup> Mark	<b>S or P</b> (indicates Marks 3&4 are both to be left to Starboard or both left to Port)
----------------------	----------------------	--	----------------------	----------------------	--

A course board showing the following indicates:

Start, Five Finger Islet and Entrance Island left to Starboard, then Five Finger Islet left to Port, then Finish.

F	E	S	F	P
---	---	---	---	---