

BASIL HOBBS MEMORIAL SIN REGATTA

Friday, Saturday and Sunday, July 1, 2 and 3, 2016
Nanaimo Yacht Club

SAILING INSTRUCTIONS: Long Course Divisions

*Sponsored by J.E Anderson and Associates
Surveyors and Engineers*



1 RULES

- 1.1 The regatta will be governed by the rules as defined in *The Racing Rules of Sailing*, the prescriptions of Sail Canada when they apply, and the rules of PHRF-NW (where applicable), the Pacific International Yachting Association (PIYA) Safety Equipment Requirements category "Nearshore".
- 1.2 In all rules governing this regatta;
 - (a) [DP] denotes a rule for which the penalty is at the discretion of the Jury; and
 - (b) [NP] denotes that a breach of this rule will not be grounds for protest by a boat. This changes RRS 60.1(a).

2 NOTICES TO COMPETITORS

Notices to competitors will be posted on the official notice board(s) located inside the NYC's clubhouse lower entrance.

3 CHANGES TO SAILING INSTRUCTIONS

Any change to the sailing instructions will be posted before 0830 hrs on the day it will take effect, except that any change to the schedule of races will be posted by 2000 hrs on the day before it will take effect.

Sailing Instructions – Long Course Divisions

4 SIGNALS MADE ASHORE

- 4.1 Signals made ashore will be displayed from the flagstaff adjacent to the NYC Clubhouse.
- 4.2 When flag AP is displayed ashore, '1 minute' is replaced with 'not less than 90 minutes' in the race signal AP.

5 SCHEDULE of RACES and REGISTRATION

Registration	Friday, July 1	1600-2000
Registration	Saturday, July 2	0700-0800
Competitor's meeting (Clubhouse upstairs hall)	Saturday, July 2	0830
Warning Signal for first race of the day	Saturday, July 2	1025
Warning Signal for first race of the day	Sunday, July 3	1025

6 DIVISION FLAGS

- 6.1 Division splits will be announced and posted during the Competitor's meeting at 0830 Saturday.
- 6.2 The flag flown by the Race Committee for each division's start will be the numeral pennant corresponding to the division number.
- 6.3 Each division will be assigned a coloured ribbon to be flown from the backstay or prominent location near the stern.

7 RACING AREA

- 7.1 The racing area will be in an area off Protection Island, Newcastle Island and Gabriola Island. It may also include Northumberland Channel, Maude Island, Entrance Island and/or Five Fingers Islets. For details see Attachment "B".

8 THE COURSES

- 8.1 All races will be listed on a committee boat signal board using the marks as detailed in Attachments "A", "B", and "C".
- 8.2 In all courses, all Aids to Navigation shall be passed on their prescribed sides except during a race, and only during that race, when an Aid to Navigation is signified as a mark of the course for that race. In the case of cardinal buoys, the indicated sides will be deemed their prescribed side.
- 8.3 No later than the warning signal, the race committee will display the course to be sailed.
- 8.4 No boats shall pass between Protection and Newcastle Islands while racing.

9 MARKS

Descriptions of the marks used are detailed in Attachment "A".

Sailing Instructions – Long Course Divisions

10 THE START

- 10.1 Races will be started using rule 26 with the warning signal made 5 minutes before the starting signal.
- 10.2 The start line will be between an orange flag on the signal boat at the starboard end and an orange buoy at the port end of the start line.
- 10.3 [NP] Boats whose warning signal has not been made shall avoid the starting area during the starting sequence for other races.
- 10.4 A boat starting later than 4 minutes after her starting signal will be scored Did Not Start without a hearing. This changes rule A4.

11 THE FINISH

- 11.1 The finish line will be provided by a second committee boat (Tug-style power boat: “*Kind of Blue*”) in a separate area from the start committee boat. This finish location for the committee boat will be within sight of the starting boat and will be detailed at the competitor’s meeting. The finish line will be between a flag on the committee boat and an orange buoy.

12 TIME LIMITS

- 12.1 The time limit for a race that includes Maude Island as a mark will be 7 hours. For a race that includes Entrance Island as a mark, the time limit will be 5 hours.
- 12.2 No races will be started after 1500 Saturday; 1430 Sunday.

13 PENALTY SYSTEM

- 13.1 Rule 44.1 is changed to permit a boat that has broken a rule of Part 2 or rule 31 to take a penalty after racing but prior to any protest hearing. Her penalty shall be a scoring penalty as calculated in rule 44.3(c) equal to 40% of the number of entries in the division (rounding 0.5 upward) but shall not be less than three places, added to her finish position. However, she shall not be scored worse than “Did Not Finish”. If she caused injury or serious damage or gained a significant advantage in the race by her breach, her penalty shall be to retire.

14 PROTESTS AND REQUESTS FOR REDRESS

- 14.1 Protest forms are available at the NYC office located on the lower level of the clubhouse. Protests shall be delivered there.
- 14.2 For each division, the protest time limit is 90 minutes after the last boat has finished the last race of the day or the race committee signals no more racing today, whichever is later.
- 14.3 Protest hearing notices will be posted on the official notice board within 30 minutes following the protest time limit to inform competitors of hearings in which they are parties or named as witnesses.
- 14.4 Notices of protests by the race committee or protest committee will be posted to inform boats under rule 61.1(b).
- 14.5 Protest hearings will be held in the Race Committee Office, located downstairs at the NYC Clubhouse, as quickly as possible and in the approximate order of receipt, beginning at the time announced on the hearing notice.

15 ARBITRATION

Sailing Instructions – Long Course Divisions

- 15.1 For a protest between two boats alleging a breach of a rule of Part 2 or rule 31, an arbitration meeting may be held prior to any protest hearing.
- 15.2 One representative from each boat will meet with the arbitrator. No witnesses will be permitted.
- 15.3 The arbitrator will advise on whether:
 - (a) One or both boats should take a penalty;
 - (b) The protest should be withdrawn; or
 - (c) The protest should go to the protest committee for a hearing.
- 15.4 When a boat accepts a penalty or the arbitrator advises that the protest should be withdrawn, the arbitrator will allow the protest to be withdrawn. This changes rule 63.1.
- 15.5 When a protest is withdrawn, it will not be reopened or made the subject of a request for redress.
- 15.6 The penalty is to be calculated according to instruction 13.1.

16 SCORING

- 16.1 One race must be completed to constitute a series.
- 16.2 When fewer than five races have been completed, a boat's series score will be the total of her race scores.
- 16.3 When five or more races have been completed, a boat's series score will be the total of her race scores excluding her worst score.
- 16.4 PHRF-NW Time-On-Time calculations will be used for scoring divisions that are not one-design.

17 [DP][NP]SAFETY REGULATIONS

- 17.1 A boat that retires from a race shall notify the race committee as soon as possible.
- 17.2 All boats shall comply with minimum equipment requirements as prescribed in PIYA SER "Nearshore" category.

18 RADIO COMMUNICATION

A boat shall neither make radio transmissions while racing nor receive radio communications not available to all boats. This restriction also applies to mobile telephones. The Race Committee will be monitoring VHF Channel 69.

19 RIGHTS TO USE NAME AND LIKENESS

In participating in an event, a competitor automatically grants the Organizing Authority and the sponsors of the event, the right in perpetuity, to make, use and show, from time to time and at their discretion, any motion pictures, still pictures and live, taped or film television and other reproductions of him or her during the period of the competition for the said event in which the competitor participates and in all material to the said event without compensation.

Sailing Instructions – Long Course Divisions

20 PRIZES

- 20.1 Prizes will be awarded for 1st, 2nd and 3rd place in each division with at least 5 boats. 1st and 2nd (possibly) will be awarded for divisions with less than 5 boats.
- 20.2 For determining the overall score for the regatta and the awarding the **Basil Hobbs Memorial Cup**, the lowest “points per race” will be determined by dividing the boat’s total series points by the number of races sailed (no throwouts). In the event of an identical tie, multiple winners will be declared.

21 DISPOSAL OF TRASH

[DP] As sailors, we seek to protect and restore our oceans and coastal waters. See rule 55. Trash must be contained on board and disposed of appropriately when back ashore. All garbage and recycling is to be deposited in the NYC club facilities provided.

22 DISCLAIMER OF LIABILITY

Competitors participate in the regatta entirely at their own risk. See RRS rule 4, Decision to Race. The organizing authority will not accept any liability for material damage or personal injury or death sustained in conjunction with or prior to, during, or after the regatta.

23 INSURANCE

Each participating boat shall be insured with valid third-party liability insurance with a minimum cover of \$1,000,000 per event or the equivalent.

Attachment A

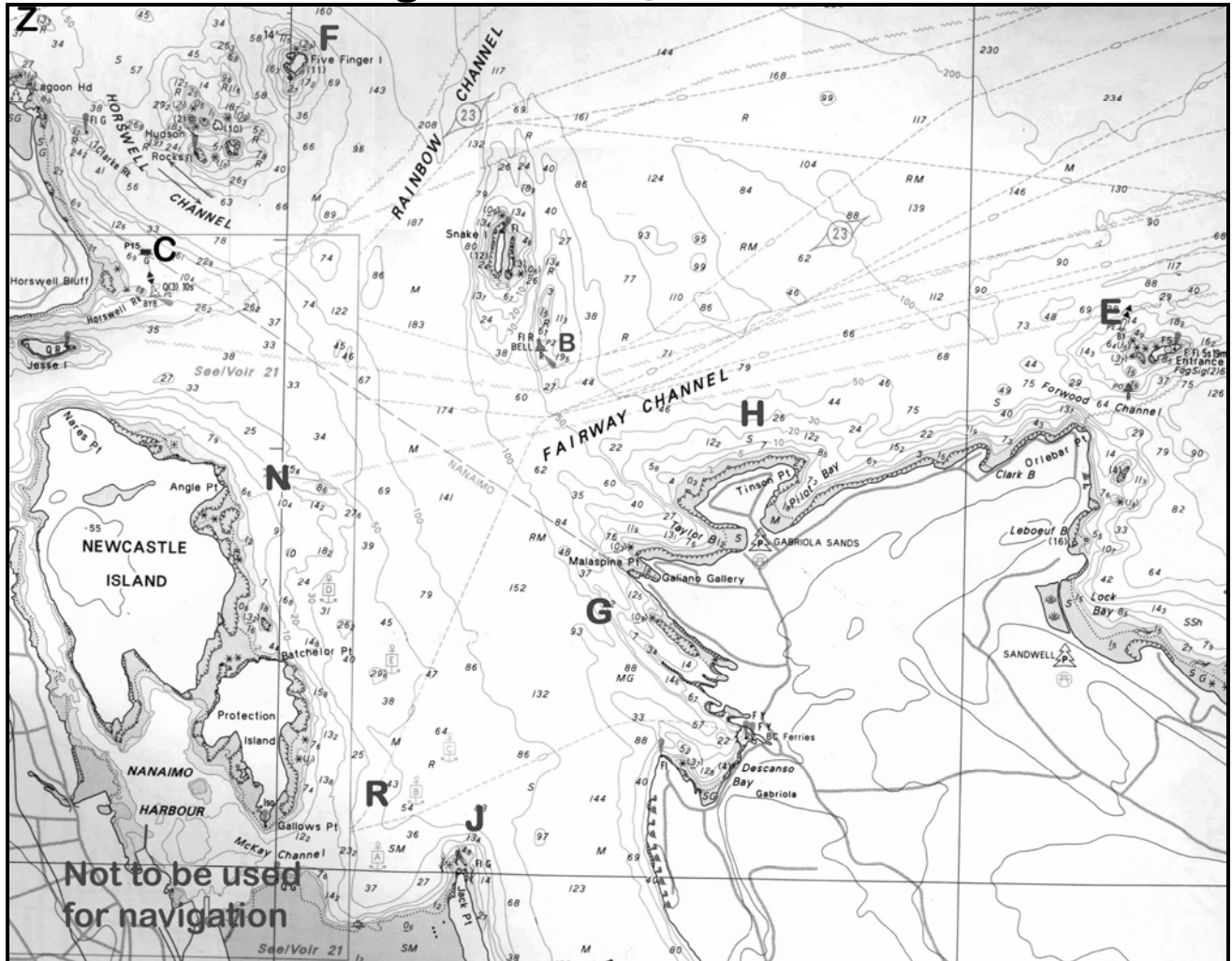
Marks of the Course

Warning: Yachts are advised that shallow water may exist in areas surrounding marks and the use of navigational charts and depth sounders is recommended. In addition, be advised that Military Activity Area Whisky Golf located north of Five Finger Islets may be active on the day of the race in which case yachts are required to keep well clear. Marks are as follows – approximate locations are on the diagram included in these instructions.

Designation	Name
B	Snake Island Bell Buoy marked P2
C	Green Can Buoy marked P15 in Horswell Channel
E	Entrance Island
F	Five Finger Islet
G	Inflatable Mark laid to the southwest of Malaspina Point on Gabriola Island.
H	Inflatable Mark laid to the north of Tinson Point on Gabriola Island
J	Inflatable Mark near Jack Point
M	Maude Island <i>(NB: yachts are cautioned to keep well clear of a drying reef offshore of Maude Island on the west side of the island)</i>
N	Inflatable Mark laid off Angle Point on Newcastle Island
R	Inflatable Mark located between Protection Island and Jack Point
W	Windward Mark – Inflatable Mark laid to weather of the starting line.
L	Leeward Mark – Inflatable Mark laid to leeward of the starting line
Z	Inflatable Mark laid in the vicinity of Neck Point

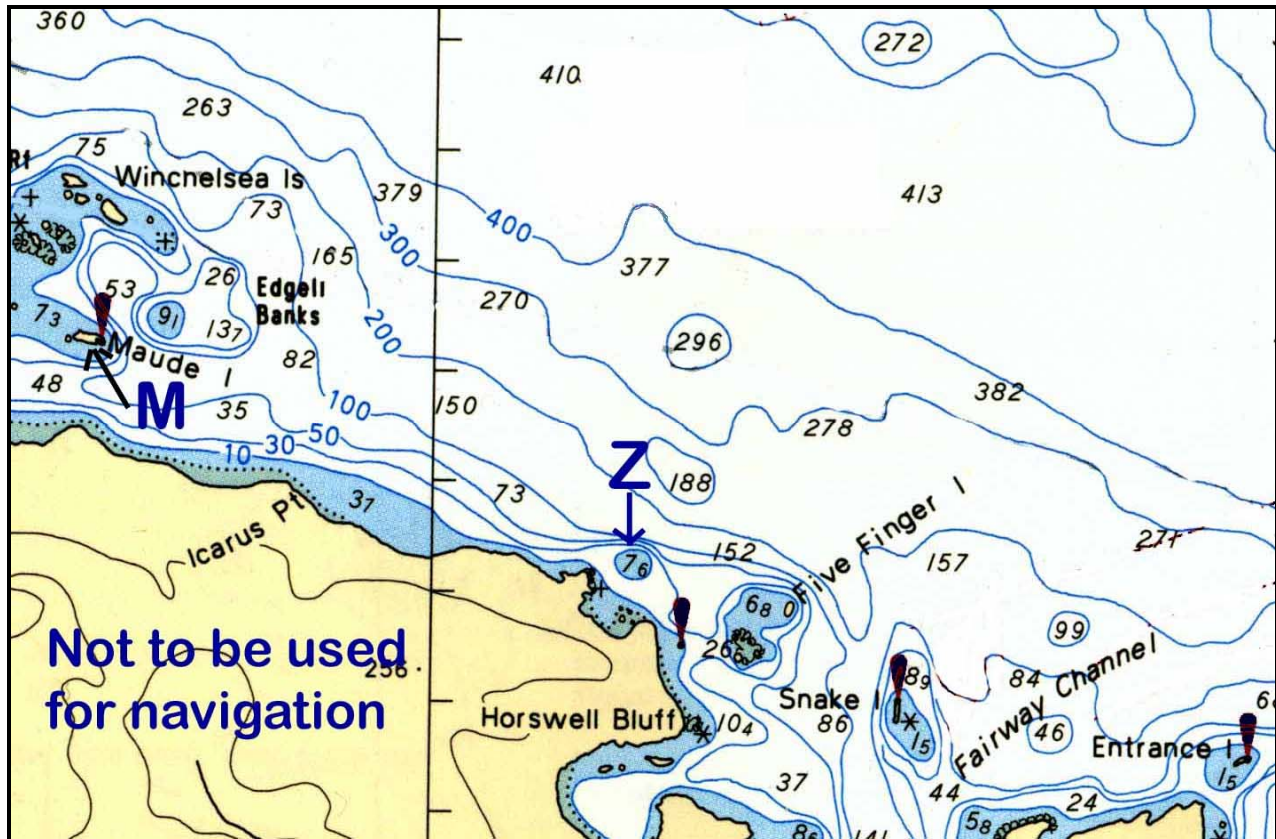
Attachment B

Racing Areas (large scale detail)



Attachment B (continued)

Racing Areas (small scale showing Maude Island)



Attachment C

Course Board Description

The course board indicates the Marks in the order they are to be rounded, and the side (Port or Starboard) the Marks are to be left when rounding. For example:

1 st Mark	2 nd Mark	3 rd Mark	4 th Mark etc.	S or P (indicates Marks are to be left all to Starboard or all to Port)
----------------------	----------------------	----------------------	------------------------------	---

If the rounding side is not the same for all Marks of the course, the S or P indicator defines the side for the Marks listed to the left of the S or P indicator. Marks following this S or P indicator will be rounded on the opposite side, and this will be indicated by another S or P indicator etc. For example:

1 st Mark	2 nd Mark	S or P (indicates Marks 1&2 are both to be left to Starboard or both left to Port)	3 rd Mark	4 th Mark	S or P (indicates Marks 3&4 are both to be left to Starboard or both left to Port)
----------------------	----------------------	--	----------------------	----------------------	--

Another example: a course board showing the following indicates: *Start, Five Finger Islet and Entrance Island left to Starboard, then Five Finger Islet left to Port, then Finish.*

F	E	S	F	P
---	---	---	---	---