

Cutty Sark Snake Island Nanaimo Regatta

Melges 24 & Martin 242 classes

Sponsored by McElhaney

Friday to Sunday, June 28 to 30, 2013
Nanaimo Yacht Club

Sailing Instructions

1 RULES

The regatta will be governed by the rules as defined in *The Racing Rules of Sailing*.

2 ENTRIES

Eligible boats may be entered by completing registration with the organizing authority in accordance with the Notice of Race.

3 NOTICES TO COMPETITORS

Notices to competitors will be posted on the official notice board located on the lower floor of the Nanaimo Yacht Club clubhouse.

4 CHANGES TO SAILING INSTRUCTIONS

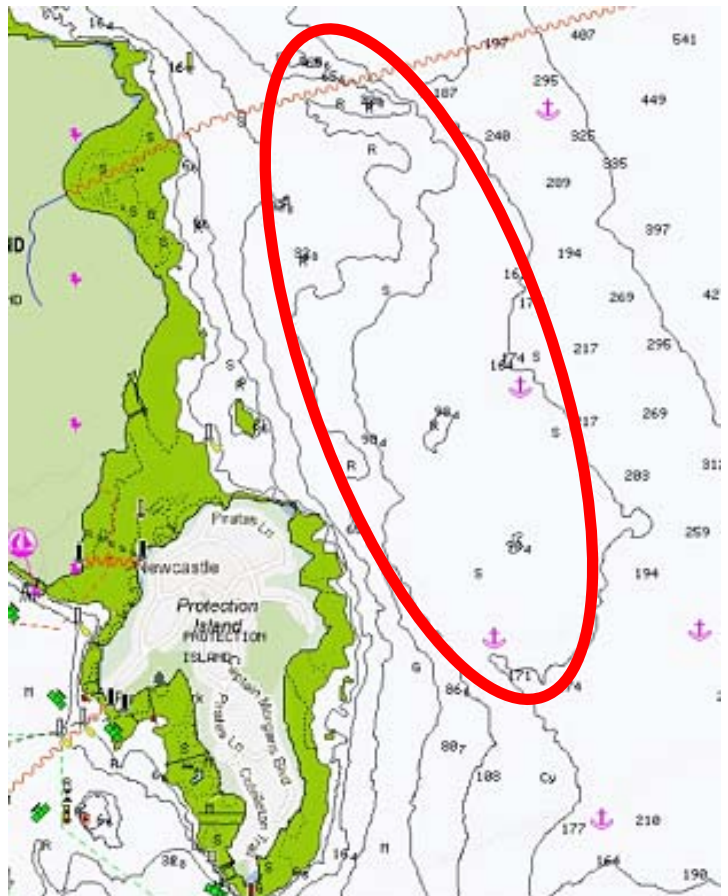
Any change to the sailing instructions will be posted before 0830 on the day it will take effect, except that any change to the schedule of races will be posted by 2000 on the day before it will take effect.

5 SIGNALS MADE ASHORE

- 5.1 Signals made ashore will be displayed on the Nanaimo Yacht Club flag pole located beside the marina entrance gate.
- 5.2 When flag "AP" is displayed ashore, '1 minute' is replaced with 'not less than 90 minutes' in the race signal "AP".

6 RACING AREA

The chart to the right shows the location of the racing area.




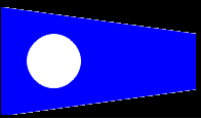
7 SCHEDULE

Registration	Fri. June 28	1600-2000
Registration	Sat. June 29	0700-0800
Skippers' Meeting	Sat. June 29	0830
Fun race Nanaimo Harbour Start (does not count towards the series)	Saturday, June 29	Warning: 1000
Warning Signal for first race of the day	Saturday, June 29	1045
Warning Signal for first race of the day	Sunday, June 30	1000

On the last day of the regatta no warning signal will be made after 1500.

8 CLASS FLAGS

The class flags are identified in the table below.

Class	Numeral Pennant	Flag
Martin 242	1	
Melges 24	2	

The class flag for the Saturday fun race Nanaimo Harbour Start will be a Canadian flag.

9 MARKS

Mark	Description
Finishing/starting mark	Orange Scotsman
Turning marks	Yellow inflatable
New mark, as provided in instruction 11	Yellow with a band

Any guard mark or small vessel attached to the signal boat shall be considered as a permanent attachment, and is considered permanent part of the Committee boat.

10 THE START

- 10.1 The starting line will be between the orange flag or the sponsor flag "McElhaney" on the signal boat at the starboard end and the start mark at the port end.
- 10.2 A boat starting later than 4 minutes after her starting signal will be scored Did Not Start. This changes rule A3 and A5.
- 10.3 The Saturday morning Nanaimo Harbour Start will be using the Satellite Reef Cardinal Buoy as the pin-end of the start line and a flag at the north end of the "Visitors' Pier" (north end of the Inner Harbour Floating Breakwater) as the other end of the start line.

11 CHANGE OF THE NEXT LEG OF THE COURSE

To change the next leg of the course, the race committee will lay a new mark (or move the finishing line) and remove the original mark as soon as practicable. A new mark will be a yellow buoy with a band around it. When, in a subsequent change, a new mark is replaced, it will be replaced by an original mark. Any mark to be rounded after the new mark may be moved to maintain the course configuration without signalling.

12 THE COURSES

12.1 The chart to the right and table below show the courses, the order in which marks are to be passed, and the side on which each mark is to be left. On any course where a mark is shown as a gate, if there is only one mark in the place of a gate, competitors shall round it to port.

Signal	Mark Rounding Order
L1	Start-1-Finish
L2	Start-1-2s/2p-1-Finish
L3	Start-1-2s/2p-1-2s/2p-1-Finish
L4	Start-1-2s/2p-1-2s/2p-1-2s/2p-1-Finish

12.2 No later than the warning signal, the Race Committee signal boat will display the approximate compass bearing of the first leg and the course to be sailed.

12.3 In all courses, Aids to Navigation shall be passed on their prescribed sides. In the case of Cardinal Buoys, the indicated side will be deemed their prescribed side.

13 TIME LIMITS AND TARGET TIMES

Time limits and target times are as follows:

Class	Time Limit	Target Time
Martin 242	120	45
Melges 24	120	45

13.1 When it is in the best interest of the class and its competitors, the race committee may award finishing places to boats which are delaying the finish of the race (on course finish). The scoring abbreviation for an on course finish will be OCF. This changes rules 28.1, 35 and A3.

13.2 Boats failing to finish within 30 minutes after the first boat sails the course and finishes will be scored Did Not Finish without a hearing. This changes rules 35, A3 and A5.

14 THE FINISH

The finish line will be between the orange flag on the signal boat and the finish mark.

15 PROTESTS AND REQUESTS FOR REDRESS

15.1 Penalties for breaking a Rule other than those of RRS Part 2 will be determined by the protest committee. This changes rule 64.1(a). The scoring abbreviation for a discretionary penalty imposed under this instruction will be DPI.

15.2 Protests forms are available on the official notice board. Protests shall be delivered there.

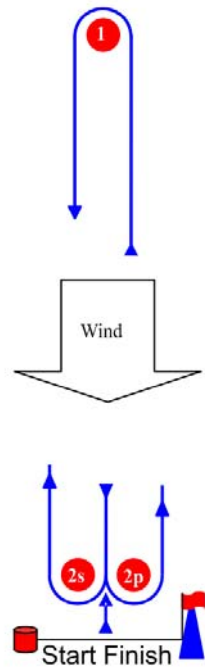
15.3 The protest time limit is 60 minutes after the last boat has finished the last race of the day.

15.4 Protest notices will be posted on the official notice board within 30 minutes of the end of protest time to inform competitors where and when there is a hearing in which they are parties to a protest or named as witnesses. Protests will be heard as quickly as possible and in approximate order of receipt.

15.5 Hearings will be held in the jury room, located at Nanaimo Yacht Club, beginning at the time announced on the hearing notice.

15.6 Notices of protests by the race committee or protest committee will be posted to inform boats under rule 61.1(b).

15.7 On the last day of racing a request for redress shall be delivered no later than the protest time limit or 30 minutes after the relevant incident. This changes rule 62.2.



16 SCORING

Eight races are scheduled of which one race must be completed to constitute a series.

- (a) When fewer than 5 races have been completed, a boat's series score will be the total of her race scores.
- (b) When 5 or more races have been completed, a boat's series score will be the total of her race scores excluding her worst score.

17 SAFETY REGULATIONS

17.1 A boat that retires from a race shall notify the race committee as soon as possible.

17.2 All boats shall comply with minimum equipment requirements as prescribed in the Safe Boating Guide issued by Transport Canada.

18 RADIO COMMUNICATION

Except in an emergency, a boat shall neither make radio transmissions while racing nor receive radio communications not available to all boats. This restriction also applies to mobile telephones. The race committee will be using VHF channel 73 for communication to run the races.

#

19 RIGHTS TO USE NAME AND LIKENESS

In participating in an event, a competitor automatically grants to the Organizing Authority and the sponsors of the event, the right in perpetuity, to make, use and show, from time to time and at their discretion, any motion pictures, still pictures and live, taped or film television and other reproductions of him/her during the period of the competition for the said event in which the competitor participates and in all material related to the said event without compensation.

20 PRIZES

Prizes will be awarded for 1st, 2nd and 3rd place in each class with at least 5 boats. 1st and 2nd (possibly) will be awarded for divisions with less than 5 boats.

21 DISCLAIMER OF LIABILITY

Competitors participate in the regatta entirely at their own risk. See rule 4, Decision to Race. The organizing authority will not accept any liability for material damage or personal injury or death sustained in conjunction with or prior to, during, or after the regatta.

22 INSURANCE

Each participating boat shall be insured with valid third-party liability insurance covering racing activity with a minimum coverage of \$1,000,000 CDN per event or the equivalent.

23 TRASH DISPOSAL

Boats shall not put trash of any type in the water. Please ensure anything that you take with you is brought back to the dock. All garbage and recycling is to be deposited in the club facilities provided.