



Nanaimo Yacht Club

# GENERAL SAILING INSTRUCTIONS 2018

## 1 RULES

- 1.1 The races will be governed by the rules as defined in *The Racing Rules of Sailing, 2017-2020*.
- 1.2 The prescriptions of the Sail Canada will apply.
- 1.3 The equipment rules of PHRF-NW will apply to PHRF divisions.
- 1.4 Class rules applicable to any one-design class will apply. Where there is conflict between the class rules and *The Racing Rules of Sailing, 2017-2020*, class rules will take precedence.

## 2 NOTICES TO COMPETITORS

Notices to competitors will be posted on the OFFICIAL RACE NOTICE BOARD located on the lower floor of the Nanaimo Yacht Club clubhouse.

## 3 CHANGES TO SAILING INSTRUCTIONS

Any change to the sailing instructions will be posted no later than 15 minutes after the scheduled start of that days Competitors Meeting.

## 4 SIGNALS MADE ASHORE

- 4.1 Signals made ashore will be displayed on the Nanaimo Yacht Club flag pole located beside the marina entrance gate.
- 4.2 When flag AP is displayed ashore, '1 minute' is replaced with 'not less than 60 minutes' in the race signal AP.
- 4.3 When flag Y is displayed ashore, rule 40.1 applies at all times while afloat. This changes the Part 4 preamble.

## 5 SCHEDULE OF RACES

- 5.1 Competitors Meeting will be at 0900 hours of scheduled race day unless alter by the NOR.
- 5.2 As many races as practicable will be held on racing days.
- 5.3 The scheduled time of the warning signal for the first race each day is 10:25.
- 5.4 When more than one race will be held on the same day, the warning signal for each succeeding race will be made as soon as practicable.
- 5.5 No warning signal will be made after 15:00.

## 6 DIVISIONS

6.1 Division flags will be:

<i>Division</i>	<i>Flag</i>
1	Numeral Pennant 1
2	Numeral Pennant 2
3	Numeral Pennant 3
etc...	

## 7 RACING AREAS

Attachment B shows the location of racing areas.

## 8 THE COURSES

8.1 The course(s) will be specified:

- a) On the water by means of a course board mounted on the committee boat. See Attachment C, or
- b) On the water by the Race Committee following the display of CODE FLAG "L" (come within hail/follow me), or
- c) On the OFFICIAL RACE NOTICE BOARD

8.2 In all courses, unless specified in 8.1; Aids to Navigation will be shall be passed on their prescribed side according to IALA – System B.

8.3 No yachts shall pass between Protection and Newcastle Islands while racing.

## 9 MARKS

Marks for each course are as described in Attachment A.

## 10 THE START

10.1 Races will be started by using rule 26 with the warning signal given 5 minutes before the starting signal.

10.2 The starting line will be between a staff displaying an orange flag on the committee boat and an inflatable start mark.

10.3 Boats whose warning signal has not been made shall avoid the starting area. The starting area is defined as 30 meters wide around the starting line.

10.4 A boat starting later than 5 minutes after her starting signal will be scored Did Not Start. This changes rule A4 and A5.

## 11 THE FINISH

11.1 The finishing line will be between a staff displaying an orange flag on the committee boat and an inflatable finish mark.

11.2 When the finishing line is described as "in the harbour", **unless otherwise stated**, it shall be interpreted as including the Gallows mark to Starboard, and Satellite Reef mark to Starboard with a finish line between a staff displaying an orange flag at the Nanaimo Yacht Club docks and the 5 knot sign on Newcastle Island. The course may be shortened at either Gallows Mark or Satellite Reef Mark.

## 12 TIME LIMITS

12.1 Standard Race

Boats failing to finish within 40 minutes after the first boat in their division has finished will be scored Did Not Finish. This changes rules 35 and A4.

If no boat has finished within 150 minutes the race will be abandoned.

12.2 Race involving Entrance Island or its Cardinal mark.

Boats failing to finish within 75 minutes after the first boat in their division has finished will be scored Did Not Finish. This changes rules 35 and A4.

If no boat has finished within 300 minutes the race will be abandoned.

**12.3 Race involving Maude Island/Halibut Bank**

Boats failing to finish within 105 minutes after the first boat in their division has finished will be scored Did Not Finish. This changes rules 35 and A4.

If no boat has finished within 420 minutes the race will be abandoned.

**12.4 If the first boat to finish sails the course in less than 30 minutes the race will not be counted.**

**13 PROTESTS AND REQUESTS FOR REDRESS**

**13.1** Protest forms are available at the OFFICIAL RACE NOTICE BOARD. Protests shall be delivered there within the protest time limit.

**13.2** For each division, the protest time limit is 60 minutes after the last boat has finished the last race of the day.

**13.3** Notices will be posted within 30 minutes of the protest time limit to inform competitors of hearings in which they are parties or named as witnesses. Hearings will be held in the jury room, located at Nanaimo Yacht Club, beginning at the time announced on the hearing notice.

**14 SCORING**

**14.1** Race results will be determined by PHRF-NW Time On Time calculation.

**14.2** The scoring system is as follows:

For NYC Race Series: CHIPS High Point Scoring System (Attachment D).

For 1 or 2 day regattas: Low Point Scoring System. (RRS Appendix A)

**14.3** One race is required to be completed to constitute a series.

**14.4** Throw-outs

- a) When fewer than 5 races have been completed, a boat's division score for the series will be the total of her race scores.
- b) When from 5 to 8 races have been completed, a boat's division score for the series will be the total of her race scores excluding her worst score.
- c) When from 9 to 13 races have been completed, a boat's division score for the series will be the total of her race scores excluding her two worst scores.
- d) When 14 or more races have been completed, a boat's division score for the series will be the total of her race scores excluding her three worst scores.

**15 SAFETY REGULATIONS**

**15.1** All competing boats shall comply with minimum equipment requirements as prescribed in the Safe Boating Guide issued by Transport Canada.

**15.2** A boat that retires from a race shall notify the race committee as soon as possible.

**15.3** A boat that is racing as either a single handed or double handed entry, crew are allowed to use autopilot mechanisms for sail changes and other situations where having one crew member assigned to steering the boat may compromise the safety of crew and boat".

**16 RADIO COMMUNICATION**

A boat shall neither make radio transmissions while racing nor receive radio communications not available to all boats. This restriction also applies to mobile telephones. The Race Committee may monitor VHF channel 69.

**17      DISCLAIMER OF LIABILITY**

Competitors participate in races entirely at their own risk. See rule 4, Decision to Race. The organizing authority will not accept any liability for material damage or personal injury or death sustained in conjunction with or prior to, during, or after the regatta.

**18      INSURANCE**

Each participating boat shall be insured with valid third-party liability insurance covering racing activity with a minimum coverage of \$1,000,000 CDN per event or the equivalent.

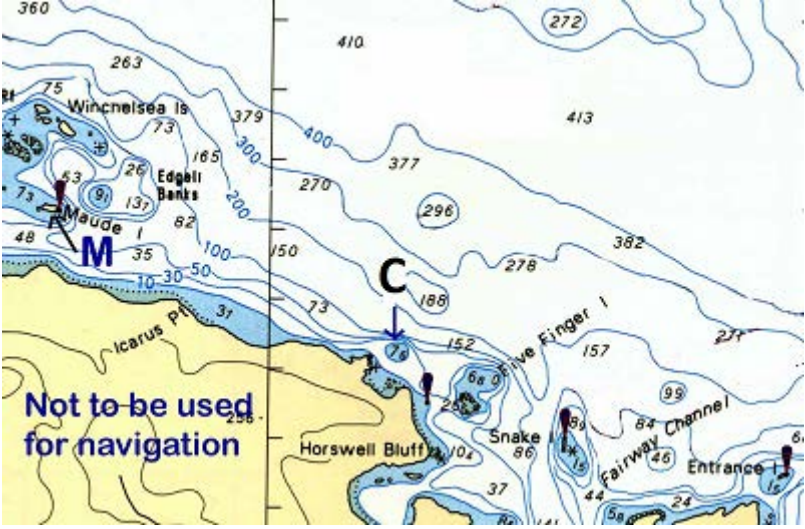
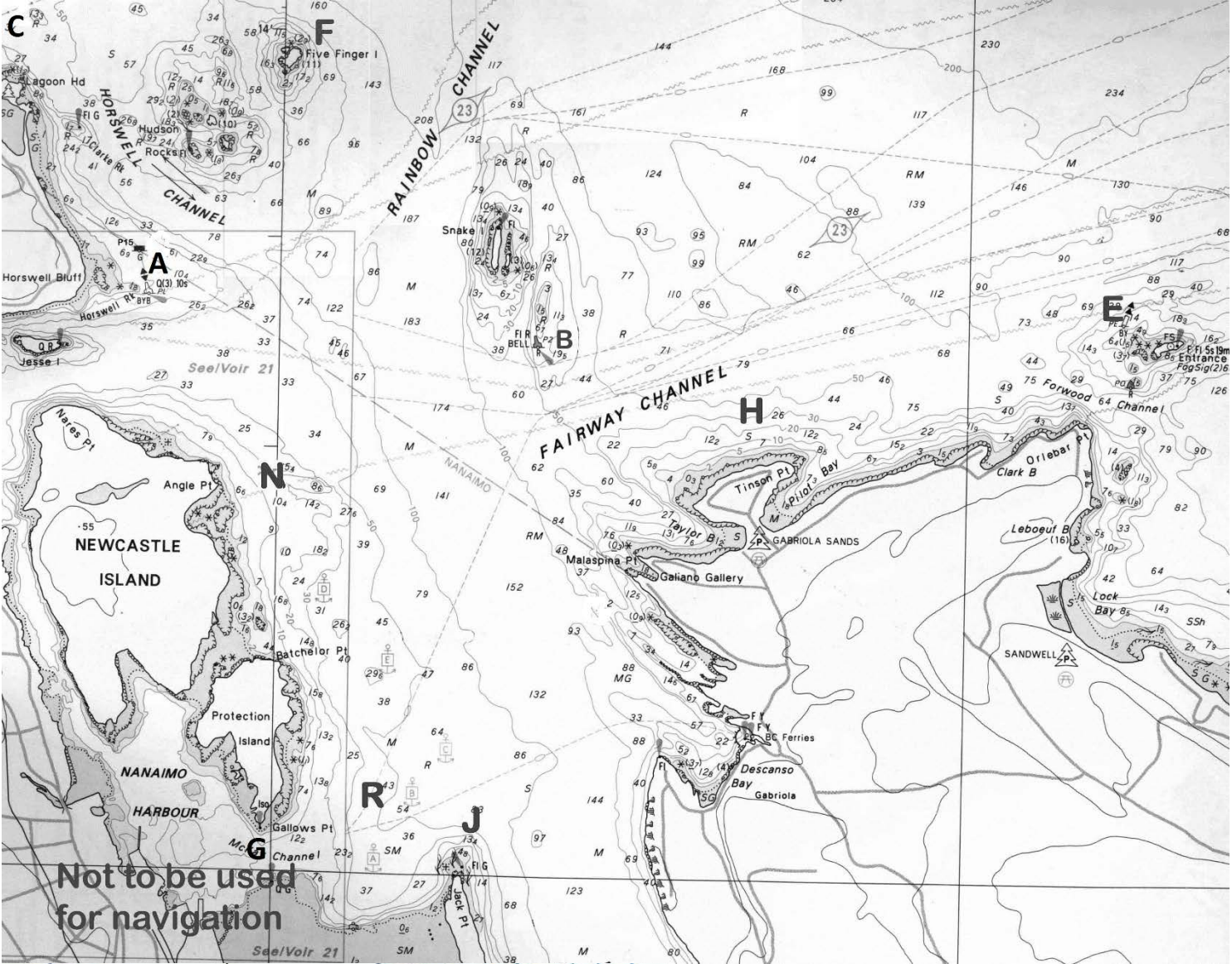
# Attachment A

## Marks of the Course

**Warning:** Yachts are advised that shallow water may exist in areas surrounding marks and the use of navigational charts and depth sounders is recommended. In addition, be advised that Military Activity Area Whisky Golf located north of Five Finger Islets may be active on the day of the race in which case yachts are required to keep well clear. Marks are as follows – approximate locations are on the diagram included in these instructions.

Designation	Name
A	Green Can Buoy marked P15 in Horswell Passage
B	Snake Island Bell Buoy marked P2
C	Inflatable mark laid in the vicinity of Neck Point
E	Entrance Island
F	Five Finger Islet
G	Gallows Point
H	Inflatable Mark laid to the north of Tinson Point on Gabriola Island
J	Inflatable Mark near Jack Point
K	Harbour finish as defined in 11.2.
L	Leeward Mark – Inflatable mark laid to leeward of the starting line
M	Maude Island <i>(NB: yachts are cautioned to keep well clear of a drying reef offshore of Maude Island on the west side of the island)</i>
N	Inflatable Mark laid off Angle Point on Newcastle Island
R	Inflatable Mark located between Protection Island and Jack Point
T	Inflatable mark laid to weather of the starting line. There may be two such marks laid in which case racers shall treat the two marks as a gate mark.
W	Windward Mark – Inflatable mark laid to weather of the starting line.
X	Halibut Bank

# Attachment B Racing Areas



# Attachment C

## Course Description

1 <sup>st</sup> Mark	2 <sup>nd</sup> Mark	3 <sup>rd</sup> Mark	4 <sup>th</sup> Mark etc.	<b>S or P</b> (indicates whether marks are to be passed all to port or all to starboard)	
----------------------	----------------------	----------------------	---------------------------	---	--

If it becomes necessary to designate some marks as Starboard and some as Port the board shall be arranged as follows:

1 <sup>st</sup> Mark	2 <sup>nd</sup> Mark etc.	<b>S or P</b> (indicates whether marks are to be passed all to port or all to starboard)	3 <sup>rd</sup> Mark etc.	<b>S or P</b> (indicates whether marks are to be passed all to port or all to starboard)	
----------------------	---------------------------	---	---------------------------	---	--

For example, a designation of

<b>F</b>	<b>E</b>	<b>S</b>	<b>F</b>	<b>P</b>	
----------	----------	----------	----------	----------	--

Indicates Start, then Five Finger Islet and Entrance Island to Starboard, Five Finger Islet to Port, then Finish.

<b>W</b>	<b>L</b>	<b>S or P</b> (indicates whether marks are to be passed all to port or all to starboard)	<b>2</b>		
----------	----------	---	----------	--	--

Indicates start, windward mark, leeward mark, twice around

## Attachment D CHIPS 3 Scoring System

**CHIPS 3 - TABLE OF POINTS**

Position (P)	Number of Starters (N)																								
	3	4	5	6	7	8	9	10	11	12	13	14	15	16	17	18	19	20	21	22	23	24	25		
1	90	91.5	92.7	93.8	94.8	95.5	96.2	96.8	97.3	97.7	98	98.3	98.6	98.8	99	99.1	99.3	99.4	99.5	99.5	99.6	99.7	99.7		
2	77.5	80	82.1	83.9	85.5	86.9	88.1	89.1	90.1	90.9	91.6	92.2	92.8	93.3	93.7	94.1	94.5	94.8	95.1	95.3	95.6	95.8	96		
3	65	68.5	71.4	74	76.2	78.2	79.9	81.5	82.8	84.1	85.2	86.1	87	87.8	88.5	89.1	89.7	90.2	90.7	91.1	91.5	91.9	92.2		
4		57	60.7	64	66.9	69.5	71.8	73.8	75.6	77.3	78.7	80	81.2	82.3	83.2	84.1	84.9	85.7	86.3	86.9	87.5	88	88.5		
5			50.1	54.1	57.7	60.8	63.7	66.2	68.4	70.5	72.3	73.9	75.4	76.8	78	79.1	80.2	81.1	82	82.7	83.5	84.2	84.8		
6				44.2	48.4	52.2	55.5	58.5	61.2	63.7	65.9	67.8	69.6	71.3	72.8	74.1	75.4	76.5	77.6	78.5	79.4	80.3	81		
7					39.1	43.5	47.4	50.9	54	56.9	59.4	61.7	63.9	65.8	67.5	69.1	70.6	72	73.2	74.4	75.4	76.4	77.3		
8						34.8	39.3	43.2	46.8	50.1	53	55.7	58.1	60.3	62.3	64.1	65.8	67.4	68.8	70.2	71.4	72.5	73.6		
9							31.1	35.6	39.6	43.3	46.6	49.6	52.3	54.8	57.1	59.1	61.1	62.8	64.5	66	67.3	68.6	69.8		
10								27.9	32.4	36.5	40.1	43.5	46.5	49.3	51.8	54.1	56.3	58.3	60.1	61.8	63.3	64.8	66.1		
11									25.2	29.7	33.7	37.4	40.7	43.8	46.6	49.2	51.5	53.7	55.7	57.6	59.3	60.9	62.4		
12										22.9	27.3	31.3	34.9	38.3	41.3	44.2	46.7	49.1	51.3	53.4	55.2	57	58.6		
13											20.8	25.2	29.1	32.8	36.1	39.2	42	44.6	46.9	49.2	51.2	53.1	54.9		
14												19.1	23.4	27.3	30.9	34.2	37.2	40	42.6	45	47.2	49.2	51.2		
15													17.6	21.8	25.6	29.2	32.4	35.4	38.2	40.8	43.2	45.4	47.4		
16														16.3	20.4	24.2	27.6	30.9	33.8	36.6	39.1	41.5	43.7		
17															15.1	19.2	22.9	26.3	29.4	32.4	35.1	37.6	40		
18																14.2	18.1	21.7	25.1	28.2	31.1	33.7	36.2		
19																	13.3	17.2	20.7	24	27	29.9	32.5		
20																		12.6	16.3	19.8	23	26	28.8		
21																			11.9	15.6	19	22.1	25		
22																				11.4	14.9	18.2	21.3		
23																					10.9	14.3	17.5		
24																						10.5	13.8		
25																							10.1		
RTD	52.6	45.5	39.4	34.2	29.9	26.1	23	20.3	18	16.1	14.4	13	11.8	10.8	9.9	9.2	8.6	8	7.6	7.2	6.9	6.6	6.3		